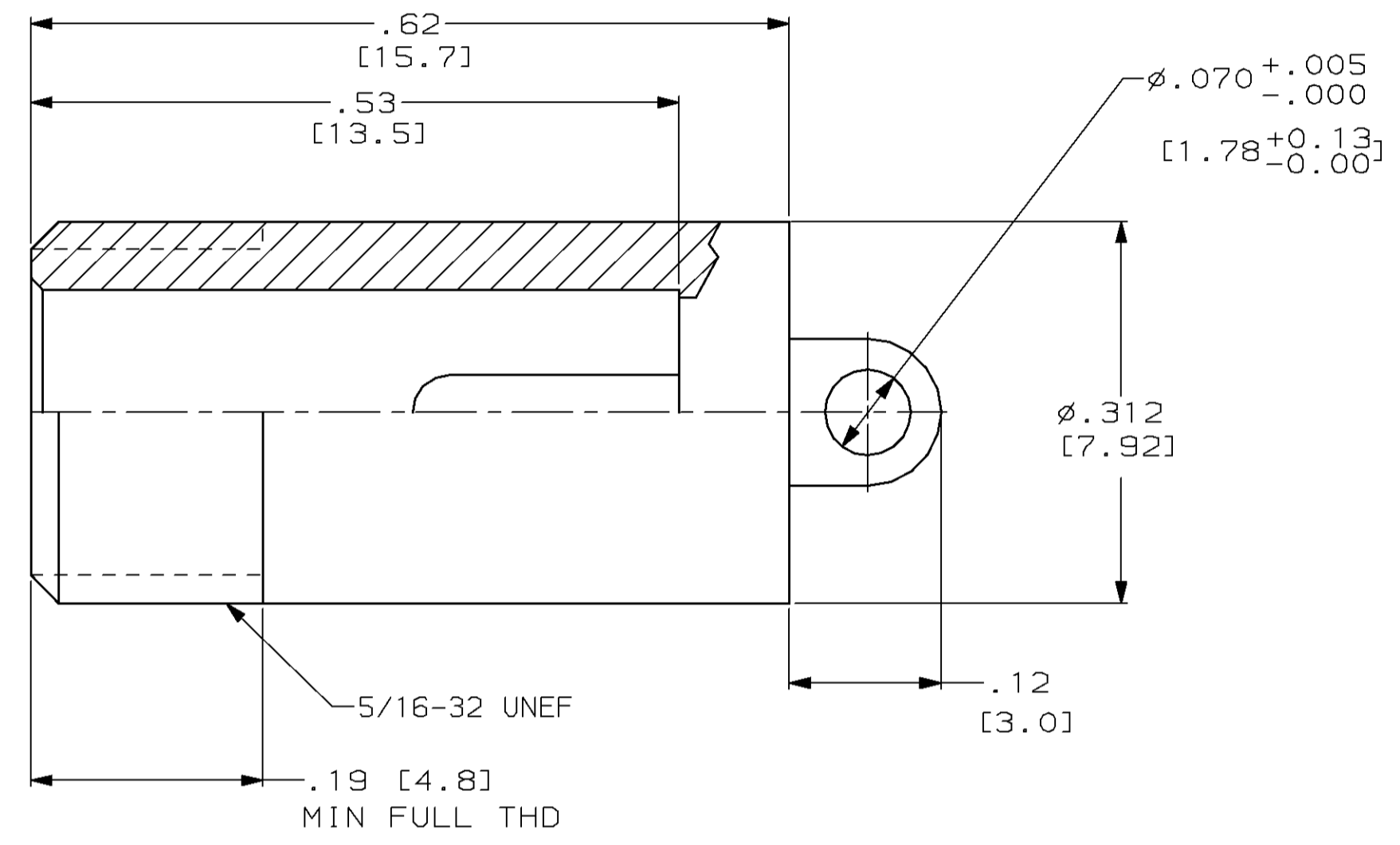
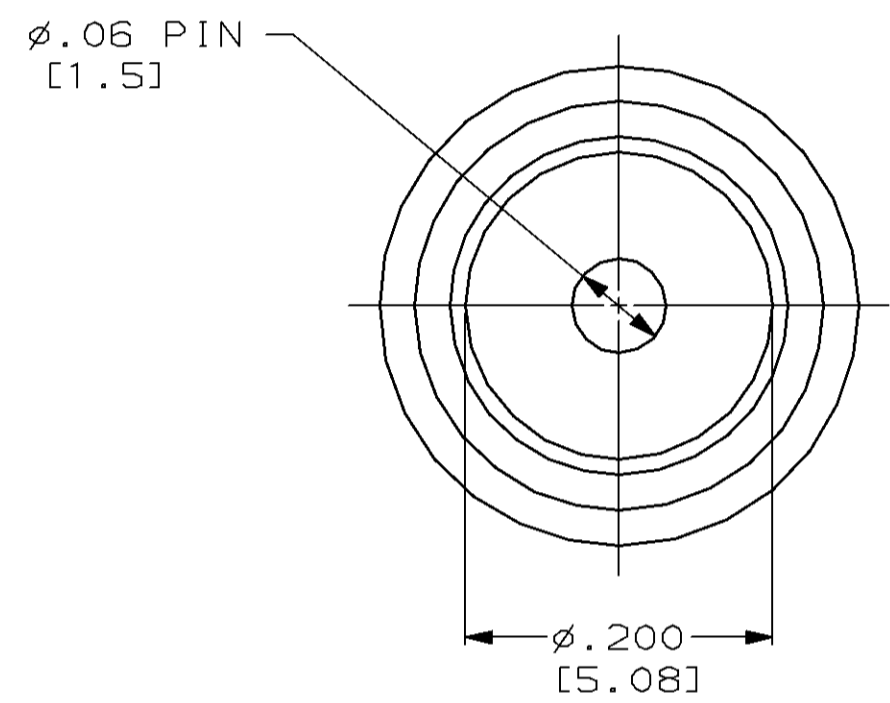


THIS DRAWING IS UNPUBLISHED. RELEASED FOR PUBLICATION, 19 .
 © COPYRIGHT 19 BY AMP INCORPORATED. ALL INTERNATIONAL RIGHTS RESERVED.

REVISIONS									
PROD CODE	LOC	DIST	P	F	ZONE	LTR	DESCRIPTION	DATE	APPD
4087	DF	SO				C	REV & REDRAWN; 0600-5601-96	CT 8-96	SG



- RECEPTACLE TO MATE WITH AMP LGH-1/2 LEAD ASSY.
- MARKED PER MIL-STD-130.
- 100% SCREENING INSPECTION IS REQUIRED:
 - A. VISUAL
 - B. MECHANICAL
 - C. INSULATION RESISTANCE: 10 GIGA OHMS (MIN) @ 300 VDC
 - D. DIELECTRIC WITHSTANDING VOLTAGE: 15 KVDC FOR 3 MIN.
 - E. SUPPLY DATA

4	.000150 MIN TIN [0.00381]	864522-1
REMARKS	TERMINAL PLATING	PART NO.

DO NOT SCALE PRINT. UNLESS SPECIFIED DIMENSIONS IN INCHES [mm] TOLERANCES ON : 2 PLC DEC ± .02 [0.5] 3 PLC DEC ± .005 [0.13] ANGLES ± -	DR 8-27-96 C.C. THOMAS	AMP Incorporated Harrisburg, PA 17105-3608		
MATERIAL EPOXY MLDG. CMPD.	CHK 9-10-96 S. GLATFELTER			
COLOR BLACK	APPD 9-10-96 S. GLATFELTER	NAME RECEPTACLE, LGH-1/2		
	RLSE 9-10-96 C.C. THOMAS	SIZE C	CAGE CODE 00779	DRAWING NO G=864522
	PRODUCT SPEC -	SCALE 8:1	SHEET 1 OF 1	
	APPLICATION SPEC -	CUSTOMER DRAWING		
	WEIGHT -			

THIS DRAWING IS A CONTROLLED DOCUMENT FOR AMP INCORPORATED. IT IS SUBJECT TO CHANGE AND THE CONTROLLING ENGINEERING ORGANIZATION SHOULD BE CONTACTED FOR THE LATEST REVISION.